



JOURNAL OF CLINICAL AND EXPERIMENTAL INVESTIGATIONS

eISSN 1309-6621

Volume 7

Issue 2

June 2016

ISSUE HIGHLIGHTS

- Survival in Operated Early and Local Advanced-Stage (IA-IIIA) Non-Small Cell Lung Cancer
- Pars Plana Vitrectomy with Internal Limiting Membrane Peeling in Patients with Myopic Foveoschisis
- Evaluation of the Pain and Foot Functions in Women with Hallux valgus deformities
- Perinatal Outcomes in Advanced Age Pregnancies
- Treatment Outcomes of Subureteric Injection and Ureteroneocystostomy in Children with Vesicoureteral Reflux
- Evaluation of the Macular Thickness by Optical Coherence Tomography in Amblyopia
- Evaluation of TNFRSF11B Gene Polymorphism in Patients with Acute Stroke
- Tissue and Plasma Endocan and Endoglin Levels in Patients with Bladder Cancer
- The Success of the Single-Dose Methotrexate Treatment in an Atypical Heterotopic Pregnancy

ABOUT THE COVER

Hydatid Cyst Related to Right Hepatic Colon Lumen

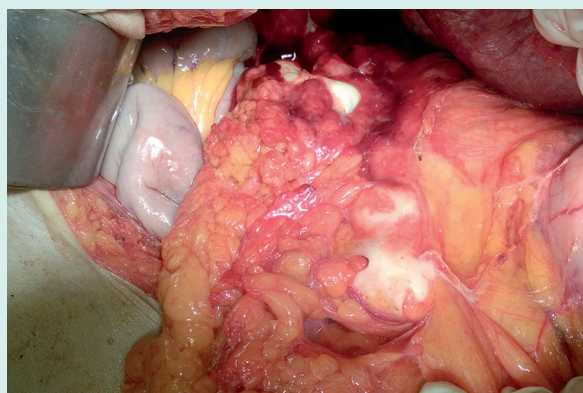


Figure 3. The macroscopic view hydatid cysts at the right suprarenal gland and hepatic flexura. The hydatid cyst at the hepatic flexura was surrounded with omentum and right colon and proximal transverse colon

Citation Abbreviation:

J Clin Exp Invest

Publishes four times a year

Open access: www.jceionline.org