



JOURNAL OF CLINICAL AND EXPERIMENTAL INVESTIGATIONS

ISSN 1309-6621

Volume 6

Issue 4

December 2015

ISSUE HIGHLIGHTS

- Effects of intra articular tramadol on articular cartilage and synovium of rats
- Long-term follow-up results of corneal collagen cross-linking in keratoconus
- Evaluation of efficacy of combined intravitreal bevacizumab and grid laser treatment in diabetic macular edema
- Uterine pathologies to be considered before uterus-preserving surgery in cases of uterine prolapse
- The expression of Fetuin-A in brain tissues of WAG/Rij Rats, genetic rat model of absence epilepsy
- Paraneoplastic digital necrosis associated with rectum carcinoma
- A psychological autopsy of a patient who was deceased due to medical complications associated with anorexia nervosa: A case report

ABOUT THE COVER

Synchronized occurrence of oncocytic variant of papillary carcinoma of the thyroid and esophageal squamous cell carcinoma metastasis

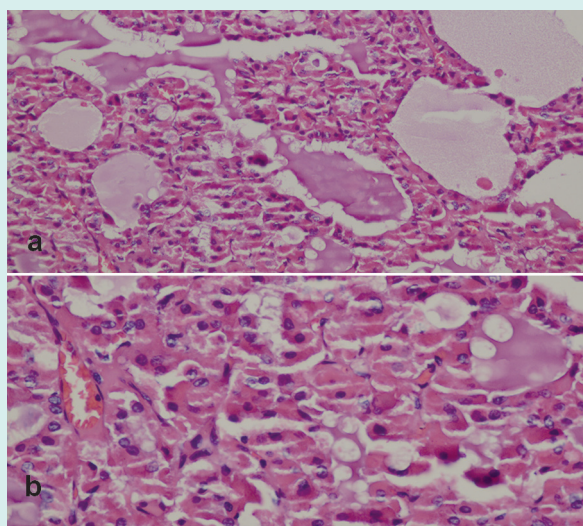


Figure 1. a-b: Hematoxylin and Eosin staining showing oncocytic variant of papillary thyroid carcinoma (a: H&E x 200) (b: H&E x 400)

Citation Abbreviation:

J Clin Exp Invest

Publishes four times a year

Open access: www.jceionline.org