



# JOURNAL OF CLINICAL AND EXPERIMENTAL INVESTIGATIONS

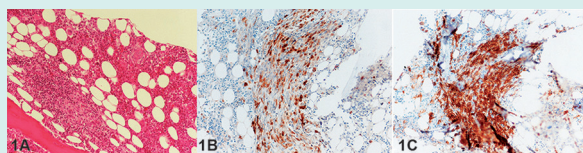
pISSN 1309-8578 eISSN 1309-6621 Volume 6 Issue 1 March 2015

## ISSUE HIGHLIGHTS

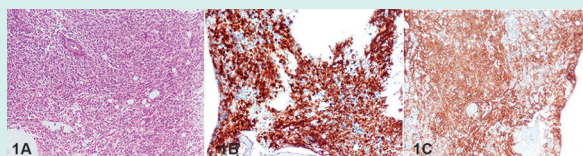
- Effects of migraine disease on the vestibulocochlear system
- Diagnostic performances of serum liver enzymes and cytokines in non-alcoholic fatty liver disease
- Detection of MYC gene rearrangements by conventional cytogenetics and fluorescent in situ hybridization in patients with acute lymphoblastic leukemia cases
- Mean platelet volume and neutrophil to lymphocyte ratio in patients with vernal keratoconjunctivitis
- Comparing efficacy of preemptively used dexketoprofen and tramadol for postoperative pain in patients underwent laparoscopic cholecystectomy

## ABOUT THE COVER

Variants of systemic mastocytosis



**Figure 1.** Case 1, Bone marrow biopsy; **A:** Hypercellular bone marrow with multifocal, dense, spindle to round shaped cells accumulation (HE, x 100), **B:** CD117 immunopositivity in blastic cells (x 200), **C:** Mast Cell Tryptase immunopositivity in blastic cells (x 200)



**Figure 2.** Case 2, Bone marrow biopsy; **A:** The blasts were showing a diffuse interstitial pattern (HE, x200), **B:** CD117 immunopositivity in blastic cells (x 200), **C:** Mast Cell Tryptase immunopositivity in blastic cells (x 200)

**Citation Abbreviation:**

**J Clin Exp Invest**

**Publishes four times a year**

**Open access: [www.jceionline.org](http://www.jceionline.org)**