



JOURNAL OF CLINICAL AND EXPERIMENTAL INVESTIGATIONS

pISSN 1309-8578 eISSN 1309-6621 Volume 6 Issue 3 September 2015

ISSUE HIGHLIGHTS

- Relationships between anthropometric measurements, leptin and IGF-1 levels in Turkish healthy newborns
- Treatment of nonseptic bursitis with endoscopic surgery
- Laparoscopic appendectomy for perforated appendicitis in children: Is intraperitoneal drainage necessary?
- Analysis of the effects of hospitalization on fine hand functions compared to gross grip in patients with rheumatoid arthritis
- Nosocomial infections and risk factors in intensive care unit of a university hospital
- Factors affecting mortality in patients with burns
- Comparison of propofol and ketofol in minor gynecologic interventions

ABOUT THE COVER

Laryngeal inflammatory myofibroblastic tumor

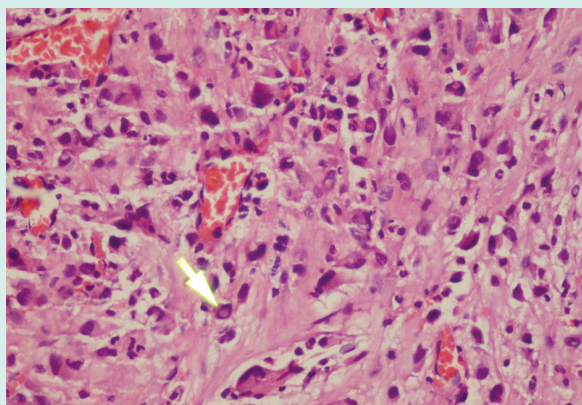


Figure 1. Mild pleomorphic myofibroblastic cells, showing eosinophilic pseudo-inclusions in some of them, with mixed type inflammatory cells (H&E x 400)

Citation Abbreviation:

J Clin Exp Invest

Publishes four times a year

Open access: www.jceionline.org